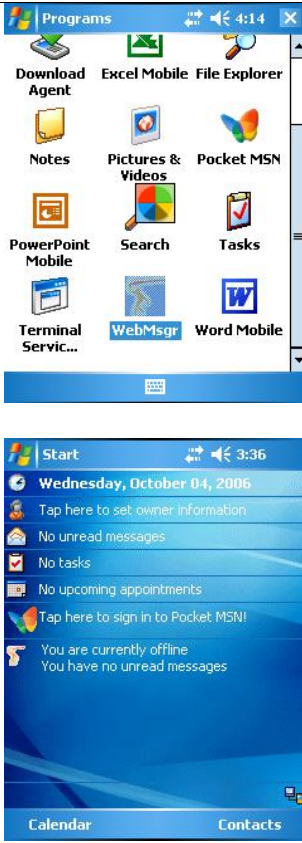

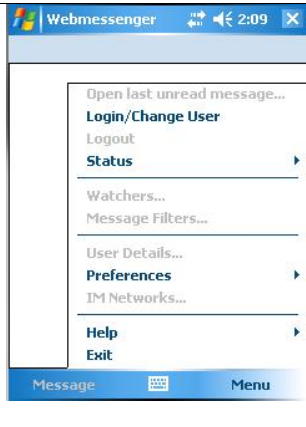

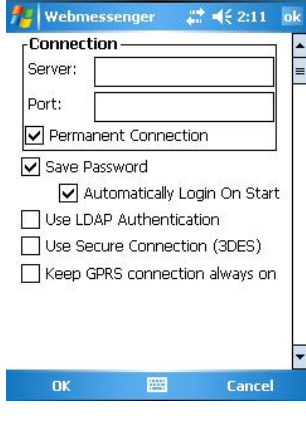
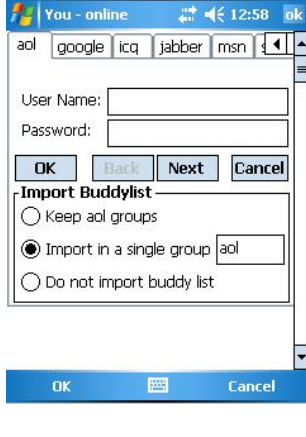




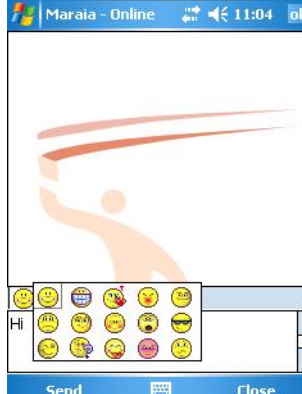
WebMessenger Mobile Instant Messenger for Pocket PC-WM 5.0 Users Guide

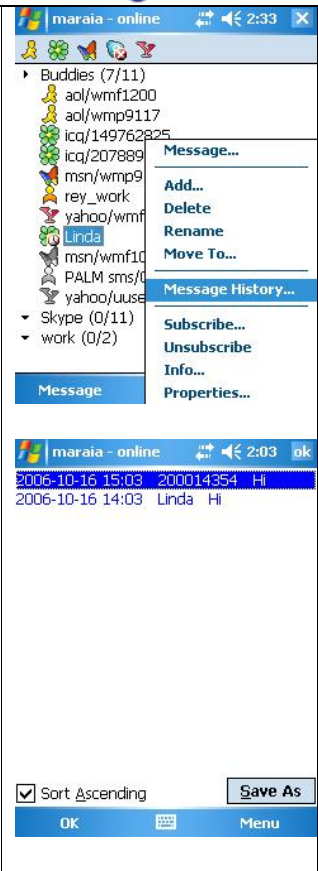
Version 2.6
02/16/2007



1.		Upon successful installation, the WebMessenger icon will appear on the PPC 'Programs' screen. To start the WebMessenger application click on the WebMessenger icon or Today screen item.
----	--	--

2.	 <p>The screenshot shows a dialog box titled "Webmessenger Account" with a question mark icon. The text inside asks, "Do you have an existing Webmessenger account?" and provides two buttons: "Yes" and "No". The dialog box is overlaid on the WebMessenger application window.</p>	<p>Upon first launch, the application will ask you if you already have an existing WebMessenger account. If you are an existing WebMessenger user, select Yes and fill in your WebMessenger user name and password. If you do not have a WebMessenger account, please select No and the application will create a WebMessenger account for you.</p>
3.	 <p>The screenshot shows the WebMessenger application window with the "Menu" open. The menu items are: "Open last unread message...", "Login/Change User", "Logout", "Status", "Watchers...", "Message Filters...", "User Details...", "Preferences", "IM Networks...", "Help", and "Exit".</p>	<p>If you have an existing WebMessenger account, go to the login screen – Menu/Login/Change User and enter your user name and password</p>
4.	 <p>The screenshot shows the WebMessenger login screen. It has a title bar with "rey" and "11:15". There are two input fields: "User Name:" with the text "marala" and "Password:" with asterisks. Below the password field is a "Settings" button. At the bottom, there are "Cancel" and "Settings ..." buttons, and a "Login" button.</p>	<p>If your user name is an email address, you must use the symbol % instead of the symbol @</p>

<p>5.</p>	 <p>The screenshot shows the 'Webmessenger' dialog box with the following settings:</p> <ul style="list-style-type: none"> Server: [Empty text box] Port: [Empty text box] <input checked="" type="checkbox"/> Permanent Connection <input checked="" type="checkbox"/> Save Password <input checked="" type="checkbox"/> Automatically Login On Start <input type="checkbox"/> Use LDAP Authentication <input type="checkbox"/> Use Secure Connection (3DES) <input type="checkbox"/> Keep GPRS connection always on <p>Buttons: OK, Cancel</p>	<p>The server settings are pre-configured and you would typically not need to change anything in them. Here is the server settings info in case it gets corrupted: Server: im.webmessenger.com Port: 443 You can also use ports 80 and 1717 in case there is a problem with port 443.</p>
<p>6.</p>	 <p>The screenshot shows the 'You - online' wizard with the following settings:</p> <ul style="list-style-type: none"> Networks: aol, google, icq, jabber, msn User Name: [Empty text box] Password: [Empty text box] Buttons: OK, Back, Next, Cancel Import Buddylist: <ul style="list-style-type: none"> <input type="radio"/> Keep aol groups <input checked="" type="radio"/> Import in a single group [aol] <input type="radio"/> Do not import buddy list <p>Buttons: OK, Cancel</p>	<p>IM networks wizard</p> <p>Use it to enter your account information for the public IM networks you intend to use. Fill out the User Name and Password, choose the way you want to import the Buddy list and tab button "OK". If you do not have or do not know your public IM account credentials tab button "Cancel" – you can always enter this information later in option Menu-> IM Networks. The wizard ends by creating a new anonymous WMP account for you.</p>
<p>7.</p>	 <p>The screenshot shows the 'maraia - online' buddy list with the following items:</p> <ul style="list-style-type: none"> Buddies (4/10) aol/wmp9117 icq/207889060 msn/wmp9114@hotmail.com yahoo/wmf1429 Linda aol/wmf1200 icq/149762825 msn/wmf1000@hotmail.com PALM sms/00359896779285 yahoo/user81 Skype (0/11) wORK <p>Buttons: Message, Menu</p>	<p>Buddy list view</p> <p>The icon in front of a Buddy name shows the Buddy's online status. If the Buddy is online, a color icon is displayed; if the Buddy is offline, a grey icon is displayed. An online icon with a status specific image in the bottom right corner is displayed for all other statuses.</p>

<p>8.</p>		<p>Selection: Buddy Menu option: Message</p> <p>Use the instant messaging screen to exchange messages with the selected buddy. Type the message and hit the Send button to send a message.</p>
<p>9.</p>		<p>Emotion icons in the instant messaging screen: Hit the smiley button to open the panel with the Emoticons.</p>

<p>10.</p>		<p>Selection: Buddy Menu option: Message History</p> <p>The Message History option displays the message history with the selected buddy. It allows the message history to be exported to a text file.</p>
------------	--	---

<p>11.</p>		<p>Selection: Buddy Menu option: Add...</p> <p>Use this screen to add a buddy or to create a new group with buddies.</p> <p>[Group]: Group in which the new buddy will be added. If the group does not exist it will be created. [IM Networks]: Choose an IM network from the list of IM networks. [User ID]: Type the exact username of the buddy. [Display Name]: Type a descriptive display name for the buddy. If you leave this field empty, the username will be used for a display name.</p> <p>Hint: you can show/hide groups from the buddy list screen by pressing 'g' or show/hide offline buddies by pressing 'o'.</p>
<p>12.</p>		<p>Selection: Buddy Menu option: Delete</p> <p>This option deletes the selected buddy from your buddy list</p>

13.



Selection: Buddy
Menu option: Rename Buddy

Allows you to change the display name of a buddy.

You can only change the display name, not the User ID of existing buddies in your buddy list.

If you have entered a wrong User ID and want to change it, you need to delete the buddy and add it again with the proper ID.

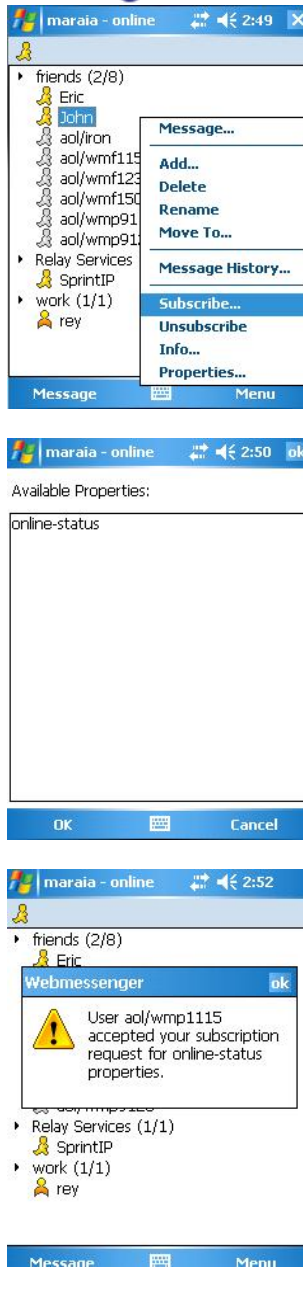
14.



Selection: Buddy
Menu option: Move To



Allows you to move a buddy from one group to another. Just type or select the group to which you want to move the buddy.


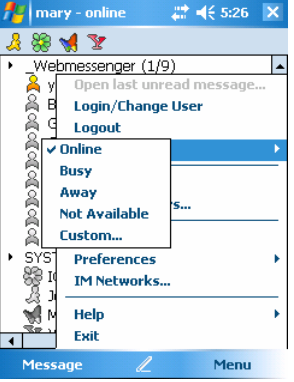
15.



Selection: Buddy
Menu option: Subscribe

Use this screen to subscribe for various buddy properties. You will see a list of properties used by this buddy. The most important property is the 'online-status'. Subscribing for this property will ensure that you will be able to see the online status of the buddy (online, busy, away, offline). You will be able to see their value and be notified when the buddy updates them. Select "Subscribe" and hit the OK button. This will send a subscription request to the buddy and you should receive a response whether your subscription request is accepted or rejected.

<p>16.</p>		<p>Selection: Buddy Menu option: Unsubscribe</p> <p>It will unsubscribe you from all buddy's properties</p>
<p>17.</p>		<p>Selection: Buddy Menu option: Info...</p> <p>Shows the selected contact's properties</p>

<p>18.</p>	 <p>The screenshot shows the 'Buddy Properties' dialog box for a buddy named 'rey'. The dialog has a title bar 'maraia - online' and a close button. It features a list of buddies on the left, with 'rey' selected. A context menu is open over 'rey', showing options: Message..., Add..., Delete, Rename, Move To..., Message History..., Subscribe..., Unsubscribe, Info..., and Properties... (highlighted). Below the list is a 'Message' button. The main area contains a table with columns 'Property', 'Timestamp', and 'Value'. The table has one row: 'online-s...' with timestamp '16:4:54' and value 'online'. At the bottom are 'OK' and 'Cancel' buttons.</p>	<p>Selection: Buddy Menu option: Buddy Properties</p> <p>This screen allows you to view buddy properties that you have subscribed to. You will see a list of properties supported by this buddy and their values.</p>
<p>19.</p>	 <p>The screenshot shows the main menu of WebMessenger. The title bar is 'mary - online'. The menu is open, showing options: Open last unread message..., Login/Change User, Logout, Online (checked), Busy, Away, Not Available, Custom..., Preferences, IM Networks..., Help, and Exit. There is a 'Message' button on the left and a 'Menu' button on the right.</p>	<p>Menu -> Status -> Online Busy Away Not Available</p> <p>The application supports several states of online status. From the main menu you can select "Online", "Busy", "Away", and "Not Available".</p> <p>For buddies from other messenger systems their original online status info is mapped to the existing WMP Client states, as they may have a variety of states specific for this messenger system only.</p>

20.



Menu option: User Details...

This screen allows you to view and change your contact information.

21.



Menu option: Preferences / Connection...

Configures the connection preferences.

[Server]: enter the host address of the server or its IP

[Port]: enter the server Port

[Permanent Connection]: if checked will maintain a permanent TCP socket connection

[Save Password]: will save the password in the registry in encrypted format

[Use LDAP Authentication]: If checked will use LDAP authentication scheme

[Automatically Login On Start]: will login automatically when the application is started

[Use Secure connection (3DES)]: will use 3DES encryption for all traffic after the authentication

[Keep GPRS connection always on]:GPRS connection will always on

22.



Menu option: Preferences / Buddy list

Configures the buddy list preferences.

[Sort buddies by [Status] Display Name]: will sort the buddy list by online-status or by user's display name

[View buddies by IM networks]: will additionally sort the buddies by their IM network.

[Show groups]: if unchecked will view all the buddies in one group

[Show offline buddies]: if unchecked will hide the offline buddies

[Send message on enter]: if checked the messages will be single-line and will be sent when you press <enter> or the middle button

23.

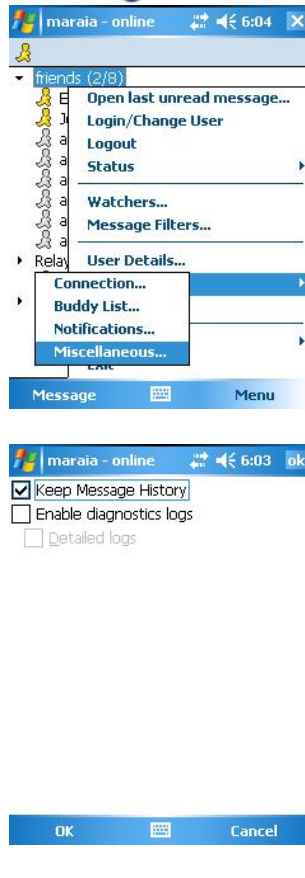


Menu option: Preferences / Notifications

[Play sound]: will play sound on new message if the message window is not on focus.

[Display message on screen]: will pop-up a notification that a new message has arrived if the message window is not in focus.

24.



Menu option: Preferences / Miscellaneous...

[Keep Message History]: stores message history between buddies.

[Enable diagnostics logs]: if this option is checked the application log will be saved on your device.

25.



Menu-> IM Networks ...

You can create or edit public IM accounts.

[Login] – Connect to the IM network

[Logout] – Disconnect from the IM network

[Create Account] and [Remove Account] – Allows you to add or remove a public IM network account.

[Import Buddy list] – Allows you to import buddies for the

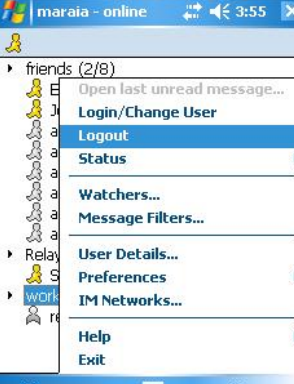
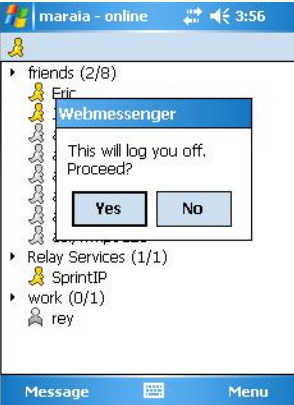
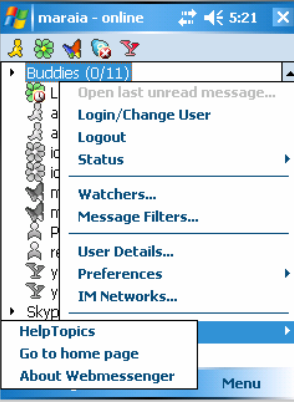
chosen public IM network either in a single group or by keeping the IM network group. Before importing, you must be logged in that network.

26.

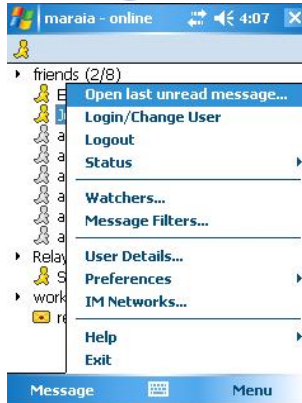


Menu option: Exit

If you want to exit the application, select "Exit". If you are logged in, you should confirm the Exit command by selecting "Yes" and WebMessenger will logout from the public server.

<p>27.</p>	 	<p>Menu option: Logout</p> <p>If you want to logout from the application, select “Logout”. A warning message will appear. Select “Yes” to log out.</p>
<p>28.</p>		<p>Menu option: Help</p> <p>The most up-to-date help is this document itself. The “About” item will show the WebMessenger version information and the “WebMessenger home page” will take you to the WebMessenger home site.</p> <p>The Help Topics option is leading to the FAQ section on the WebMessenger website.</p> <p>Register new user – will open a registration blank page on the WebMessenger website where you can set up a new WebMessenger IM account.</p>

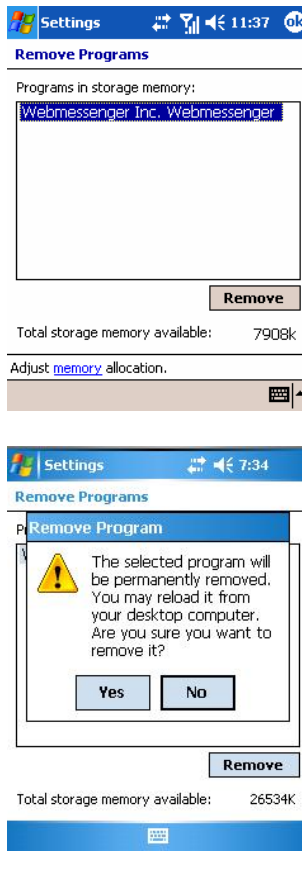
29.



Menu option: Open Last unread message...

This option is active only when an unread message is present. Select it to read the message.

30.



Uninstall

If you want to uninstall the application, press the Start Menu -> Settings -> System -> Remove Programs, Select "WebMessenger PPC Client" and press "Remove". A warning message will appear, press "yes" to continue the un-installation.

If you have installed WebMessenger through your desktop, you would need to uninstall it from there too.